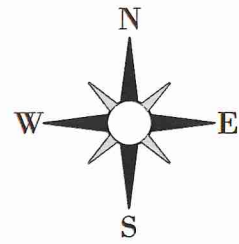


# PLAT OF SURVEY

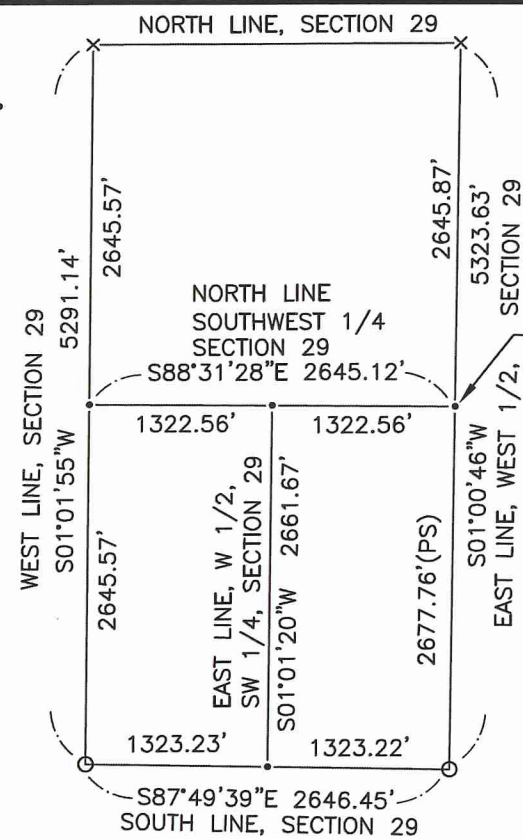
A SANITARY SEWER EASEMENT SITUATED IN THE SOUTHWEST QUARTER OF SECTION 29, TOWNSHIP 9 SOUTH, RANGE 1 WEST, MILLCREEK TOWNSHIP, WILLIAMS COUNTY, OHIO.

DETAIL (NOT TO SCALE)

- LEGEND**
- SET 5/8 INCH REBAR WITH CAP
  - FOUND IRON PIN OR PIPE
  - ⊗ FOUND RAILROAD SPIKE
  - × FOUND PK NAIL
  - △ FOUND STONE
  - POINT ESTABLISHED
  - (M) MEASURED DISTANCE
  - (PS) PREVIOUS SURVEY DISTANCE



0' 100' 200' SCALE 1" = 200'



NE CORNER,  
W1/2, SW1/4,  
SECTION 29

REFERENCE SURVEYS  
VOL 25R PG 086  
VOL 25R PG 292

TRACT 6: 0.561 ACRES  
TEMPORARY EASEMENT  
(ABUTTING PERMANENT EASEMENT)

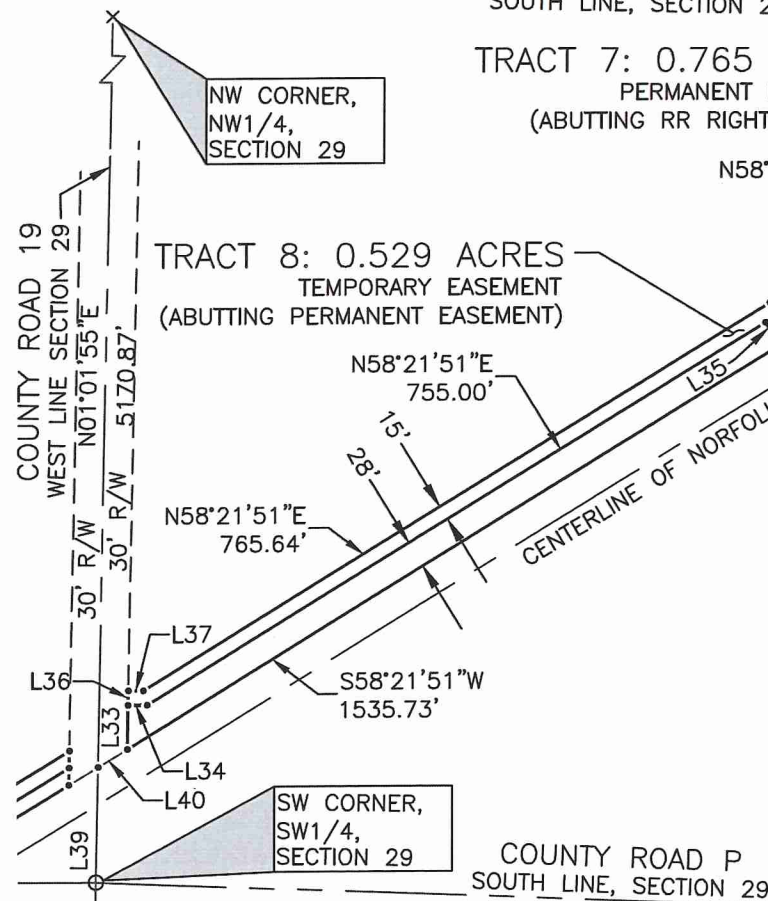
TRACT 5: 0.856 ACRES  
PERMANENT EASEMENT  
(ABUTTING RR RIGHT OF WAY)

JUDY STUCKEY & MICHAEL  
CRONINGER, TRUSTEES  
DEED O.R. 289 PG. 653

JUDY STUCKEY & MICHAEL  
CRONINGER, TRUSTEES  
DEED O.R. 289 PG. 653

NE CORNER,  
NW1/4,  
SECTION 29

SE CORNER,  
SW1/4,  
SECTION 29



NW CORNER,  
NW1/4,  
SECTION 29

TRACT 7: 0.765 ACRES  
PERMANENT EASEMENT  
(ABUTTING RR RIGHT OF WAY)

TRACT 8: 0.529 ACRES  
TEMPORARY EASEMENT  
(ABUTTING PERMANENT EASEMENT)

SE CORNER,  
W1/2, SW1/4,  
SECTION 29

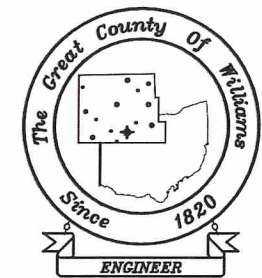
Line Table		
Line #	Length	Direction
L7	78.39'	S01°00'46"W
L8	17.81'	N01°00'46"E
L9	17.81'	N01°00'46"E
L17	17.82'	N01°01'20"E
L18	17.82'	N01°01'20"E
L19	213.00'	N58°21'51"E
L20	104.00'	N12°14'19"E
L21	40.00'	N43°28'54"E
L22	40.00'	N65°18'44"E
L23	46.00'	S89°43'04"E
L24	54.00'	S80°19'30"E
L25	44.00'	N86°02'21"E
L26	197.00'	N58°21'51"E
L27	101.81'	N12°14'19"E
L28	47.09'	N43°28'54"E
L29	46.21'	N65°18'44"E
L30	50.55'	S89°43'04"E
L31	53.44'	S80°19'30"E
L32	38.51'	N86°02'21"E

Line Table		
Line #	Length	Direction
L33	46.00'	N01°01'55"E
L34	20.00'	S89°12'44"E
L35	13.00'	S31°38'09"E
L36	15.00'	N01°01'55"E
L37	15.57'	S89°12'44"E
L38	13.00'	S31°38'09"E
L39	120.27'	N01°01'55"E
L40	35.64'	N58°21'51"E



I HEREBY CERTIFY THAT I HAVE SURVEYED THE PREMISES SHOWN ON THE PLAT ABOVE. ALL DIMENSIONS ARE SHOWN IN FEET AND DECIMALS THEREOF. SINCE THIS SURVEY DOES NOT INCLUDE A TITLE SEARCH, THERE COULD BE EASEMENTS OR OTHER ENCUMBRANCES UPON THE LAND WHICH ARE NOT SHOWN ON THIS SURVEY PLAT. IF THESE ARE REQUIRED, PLEASE FURNISH THE NECESSARY INFORMATION. THE BEARINGS AND DISTANCES SHOWN ON THE PLAT ABOVE ARE BASED ON NAD83 OHIO STATE PLANE COORDINATE SYSTEM, NORTH ZONE. THIS SURVEY HAS BEEN RECORDED IN VOL. 28R PAGE 326 OF THE WILLIAMS COUNTY SURVEY RECORDS.

*Cody Frey*  
CODY FREY  
WILLIAMS COUNTY DEPUTY ENGINEER  
REGISTERED SURVEYOR NO. 8841  
DATE: 04/28/2023



**WILLIAMS COUNTY ENGINEERS**  
12953 COUNTY ROAD G  
BRYAN, OHIO 43506  
PHONE 419-636-2454  
FAX 419-636-8687  
WWW.WMSCOENGINEER.COM